



Heads up, Texas

TALK / TEXT CRASH

Drive smart.  
Keep kids safe.

IF YOU LOVE IT,

CLICK IT

BE SAFE. DRIVE SMART. 

# Motorcycle Safety Forum

Letty von Rossum

Behavioral Traffic Safety Section Director

## #EndTheStreakTX

End the streak of daily deaths  
on Texas Roadways.



April 2022



**4,486**

**12.3**

**#EndTheStreakTX**

**November 7, 2000**

End the streak of daily deaths on Texas roadways.

**76,914**

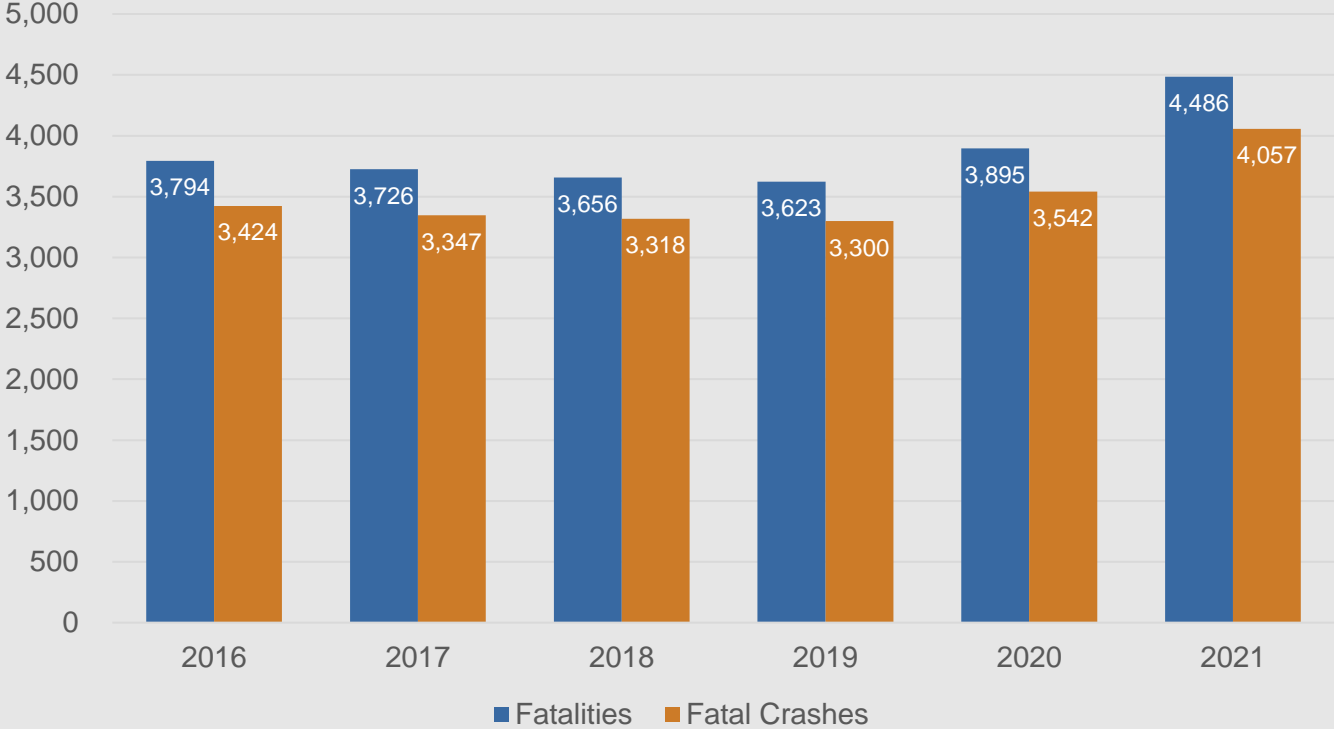
# Highway Safety Plan – Funded Program Areas



- Planning /Stakeholder Outreach
- Alcohol and Other Drug Countermeasures
- Emergency Medical Services
- Motorcycle Safety
- Occupant Protection
- Pedestrian and Bicycle Safety
- Police Traffic Services
- Traffic Records
- Driver Education and Behavior
- Railroad/Highway Crossing
- Roadway Safety
- Safe Communities
- School Bus Safety



# Texas Fatalities and Fatal Crashes 2016 - 2021



In 2021, traffic-related fatalities were at 4,486 compared with 3,895 lives lost on Texas roadways in 2020. (15% increase)

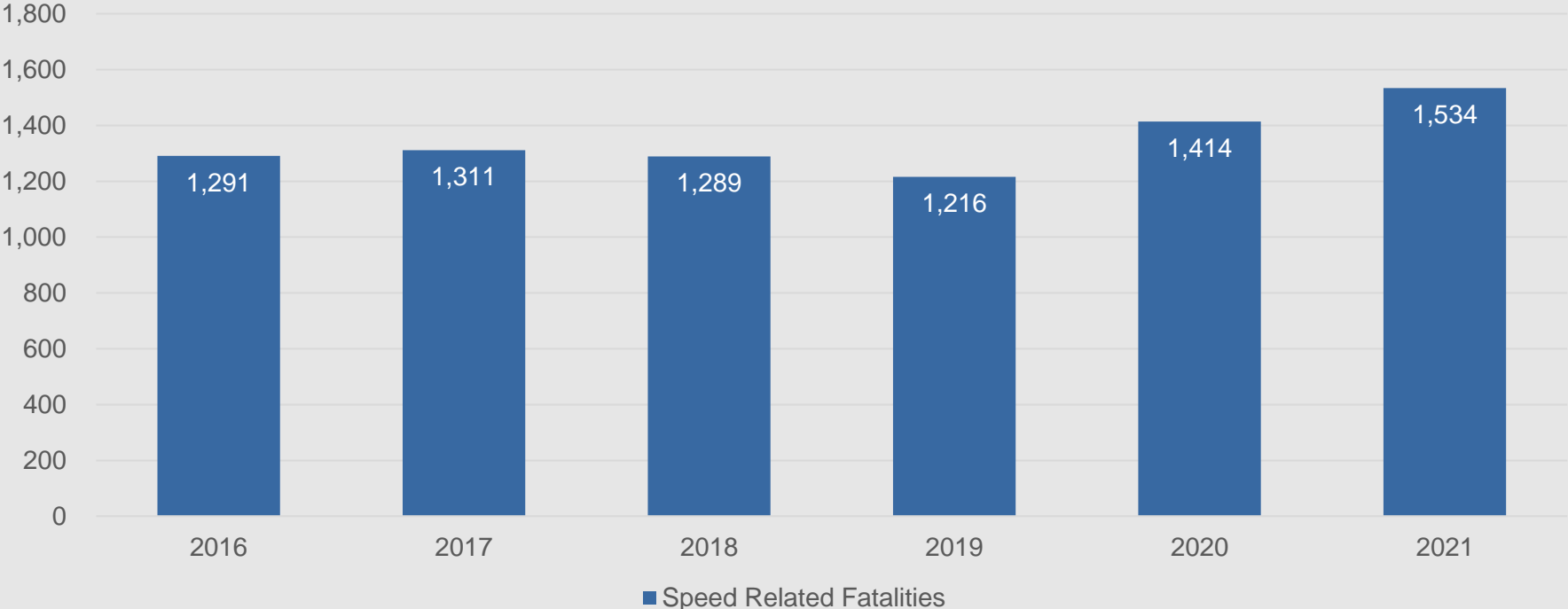
Data as of 03/28/2022

# 2021 Fatalities Summary



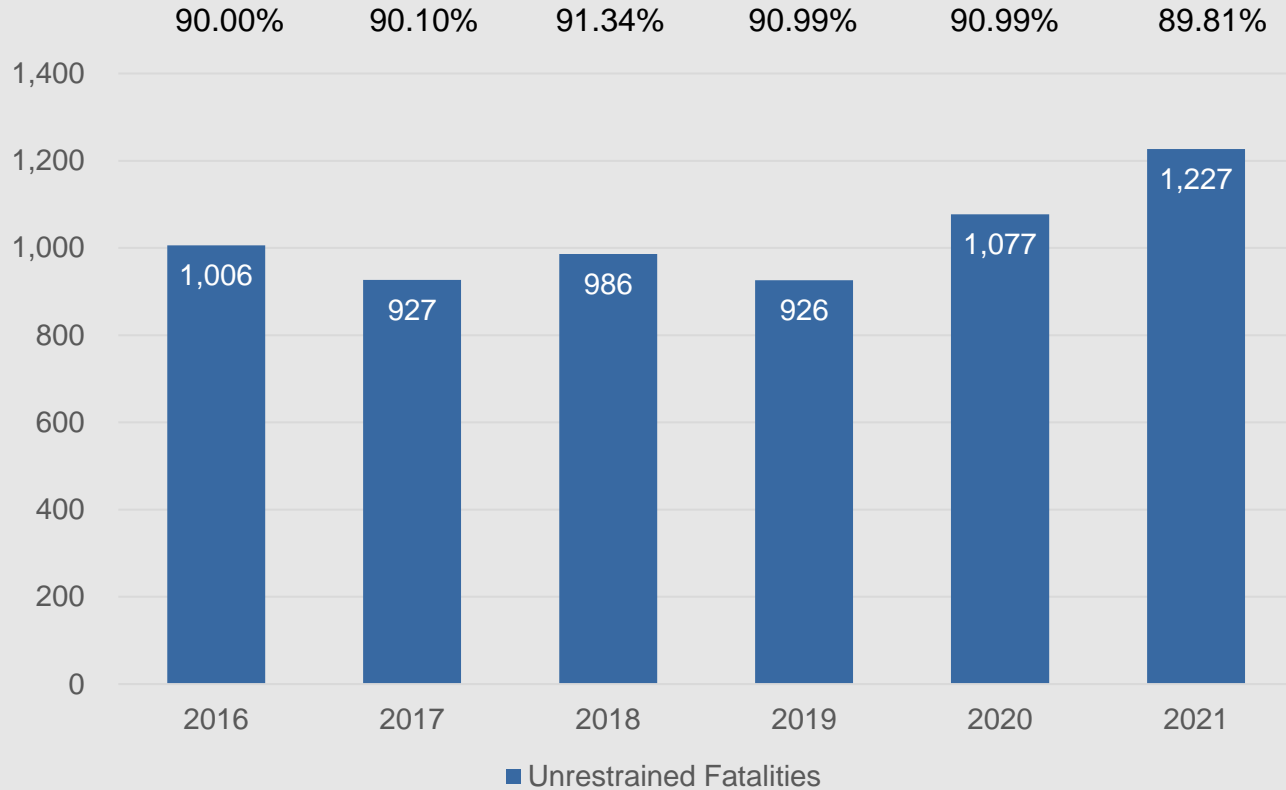
Emphasis Area	# Fatalities	% Fatalities
Speed	1,534	34%
DUI ALL	1,354	30%
Unrestrained	1,227	27%
Pedestrian	822	18%
Motorcycle	521	12%
Work Zone	244	5%
Bicycle	91	2%

# Texas Speed Related Traffic Fatalities 2016 - 2021



Data as of 03/28/2022

# Texas Unrestrained Fatalities 2016–2021



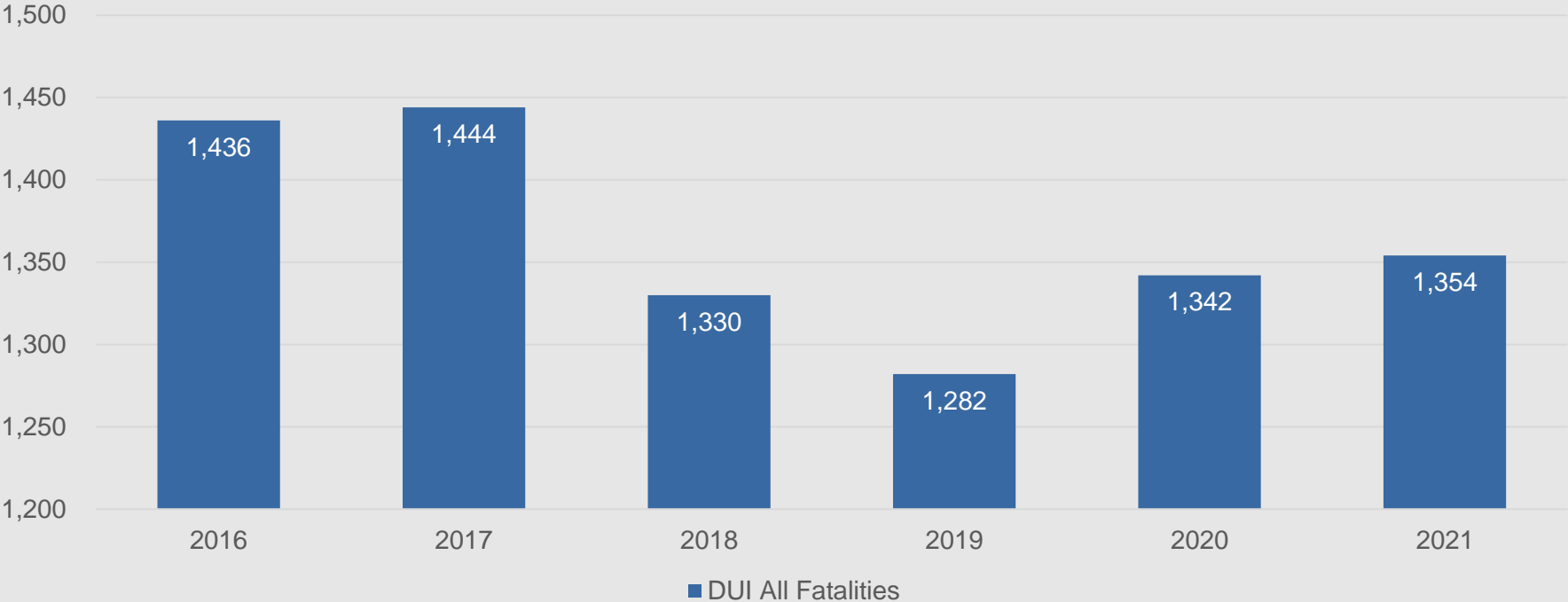
Statewide Seat Belt Use

Texas' seat belt usage rate was 89.81 percent in 2021.

46.2 percent of all vehicle occupants killed in vehicle crashes in Texas during 2021 were unrestrained.

Data as of 03/28/2022

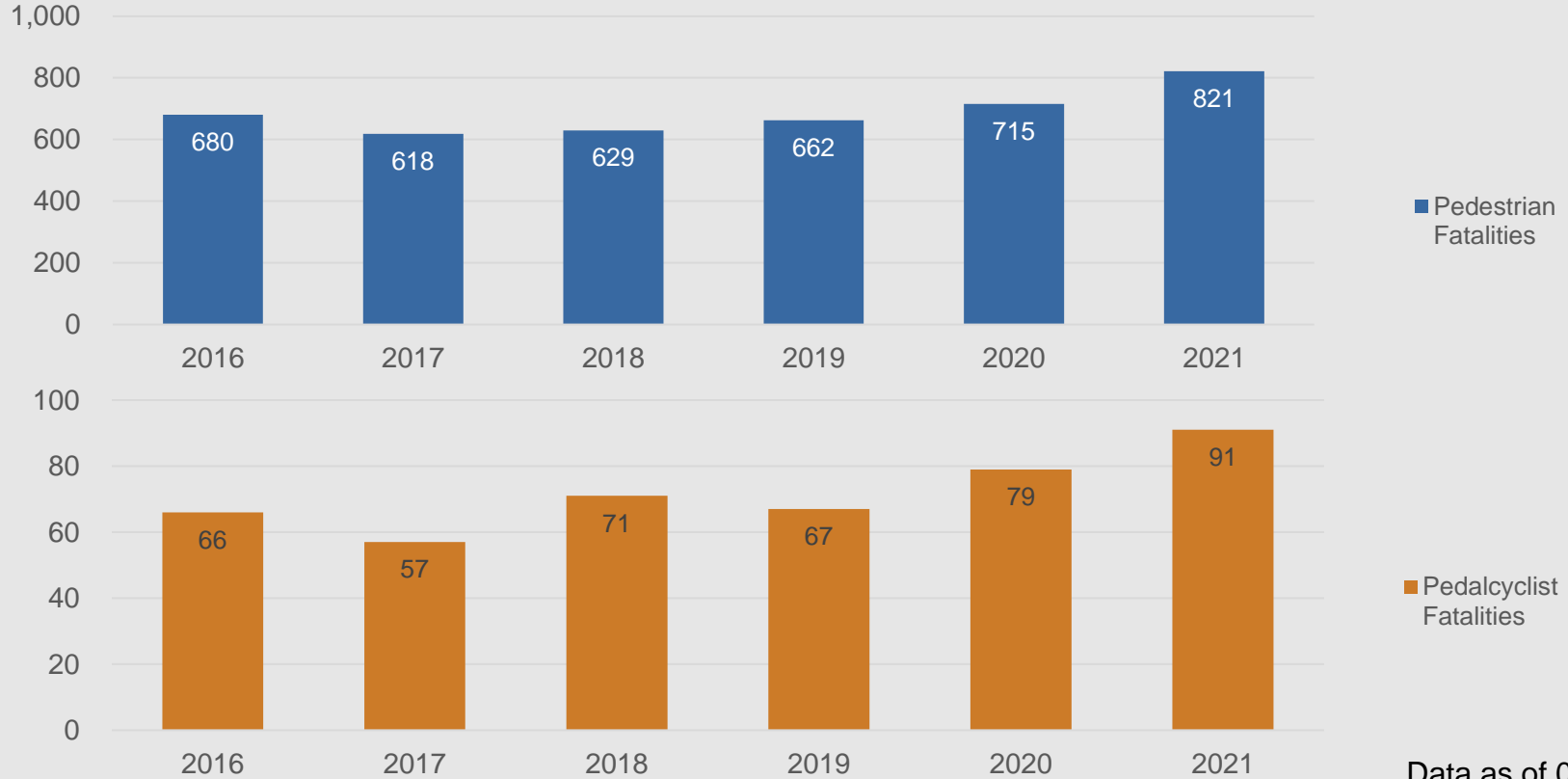
# Texas DUI All Fatalities 2016 - 2021



Data as of 03/28/2022

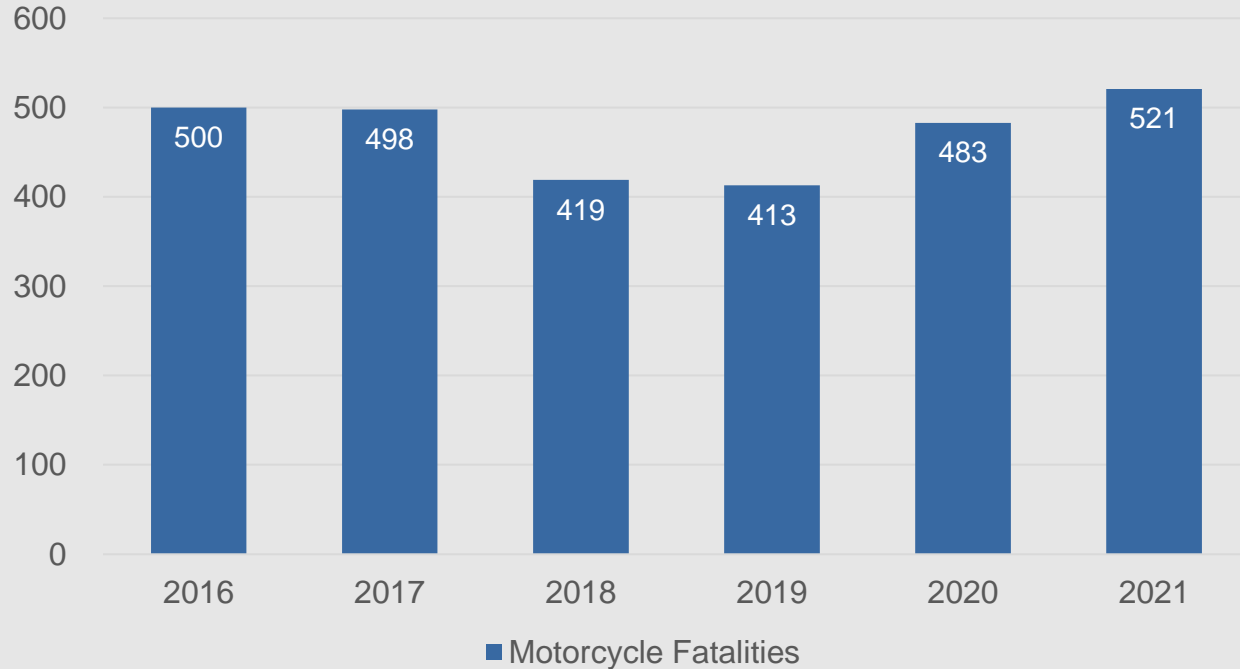


# Texas Pedestrians and Bicycle Fatalities 2016–2021



Data as of 03/28/2022

# Texas Motorcyclist Fatalities 2016–2021



In 2021, 45.5 percent of motorcyclists killed were not wearing a helmet at the time of crash.



Data as of 03/28/2022



HELP

**#EndTheStreakTX**

End the streak of daily deaths on Texas roadways.