

Texas Motorcycle Safety Forum

SATURDAY, APRIL 9, 2022

2021 Motorcycle Crash Data



2021 Motorcycle Crash Data

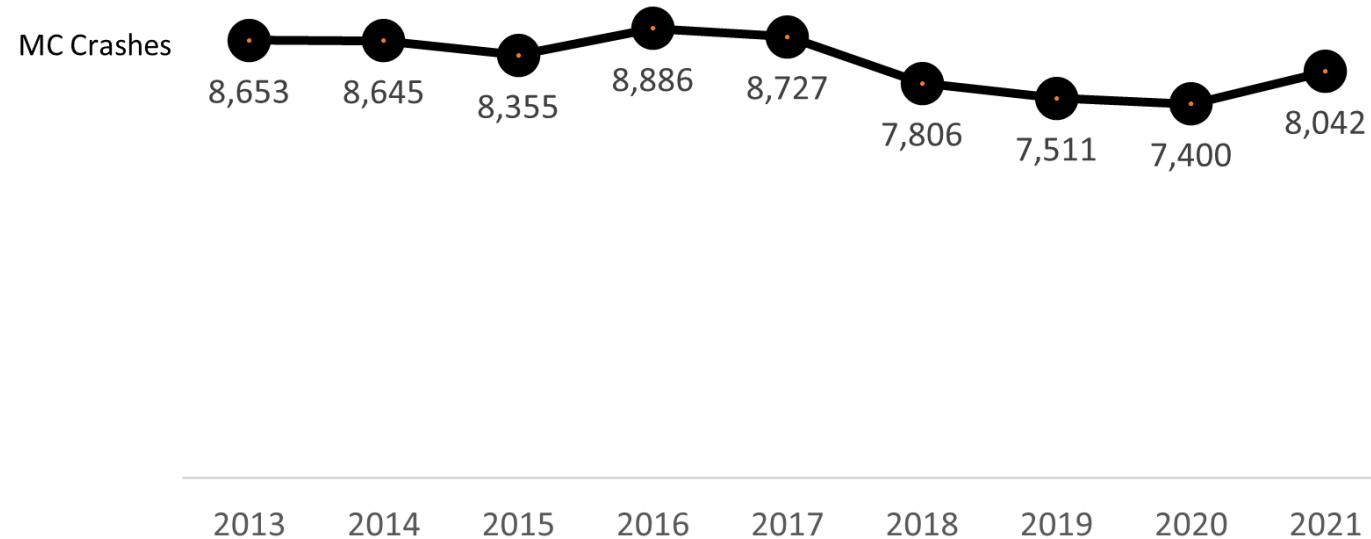
Eva Shipp, PhD & Emily Martin, MS
Center for Transportation Safety
Texas A&M Transportation Institute



2022 Texas Motorcycle Safety Forum

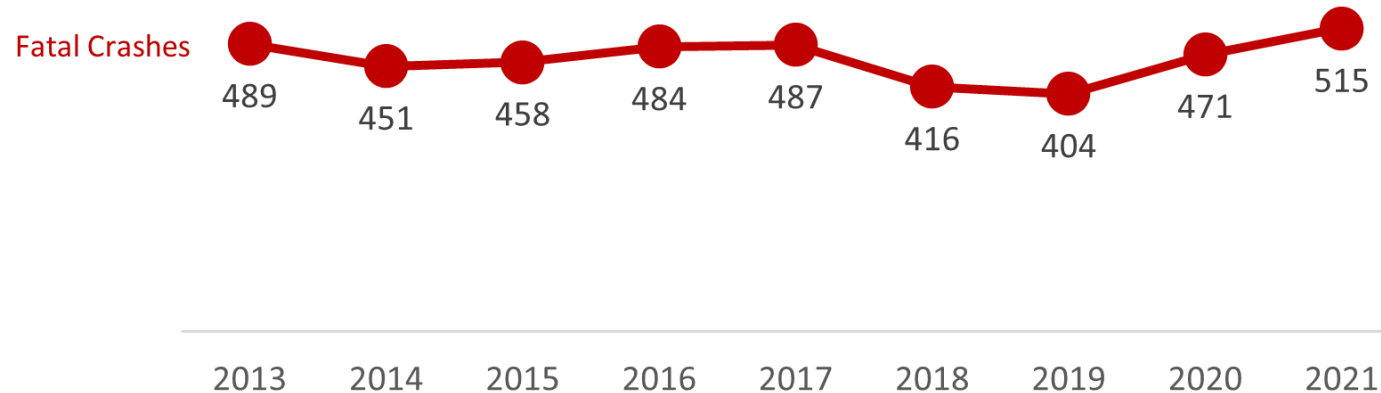
Motorcycle Crash Trends

74,025 motorcycles have been involved in crashes in Texas since 2013.



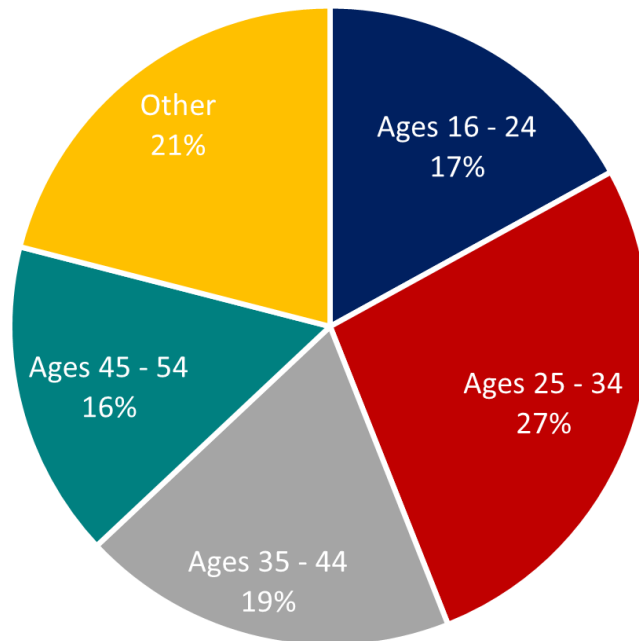
Fatal Crash Trends

4,175 motorcycles have been involved in fatal crashes since 2013, resulting in 4,268 motorcyclist deaths.

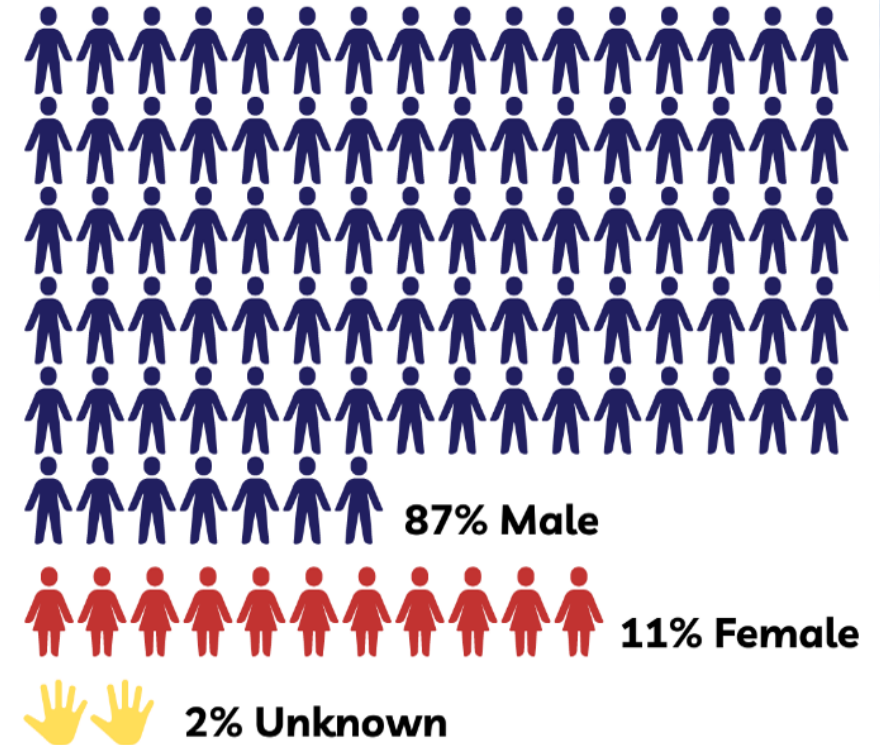


Who's involved?

While those between the **ages of 25 - 34** are most frequently involved in crashes, all age groups are at risk.

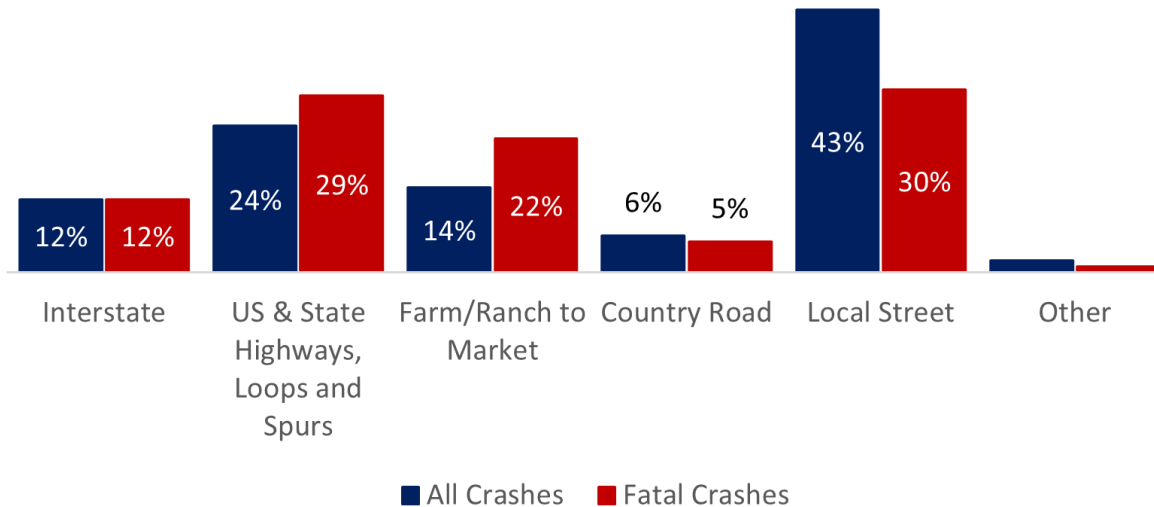


Men were involved in the vast majority of MC crashes that occurred in 2021



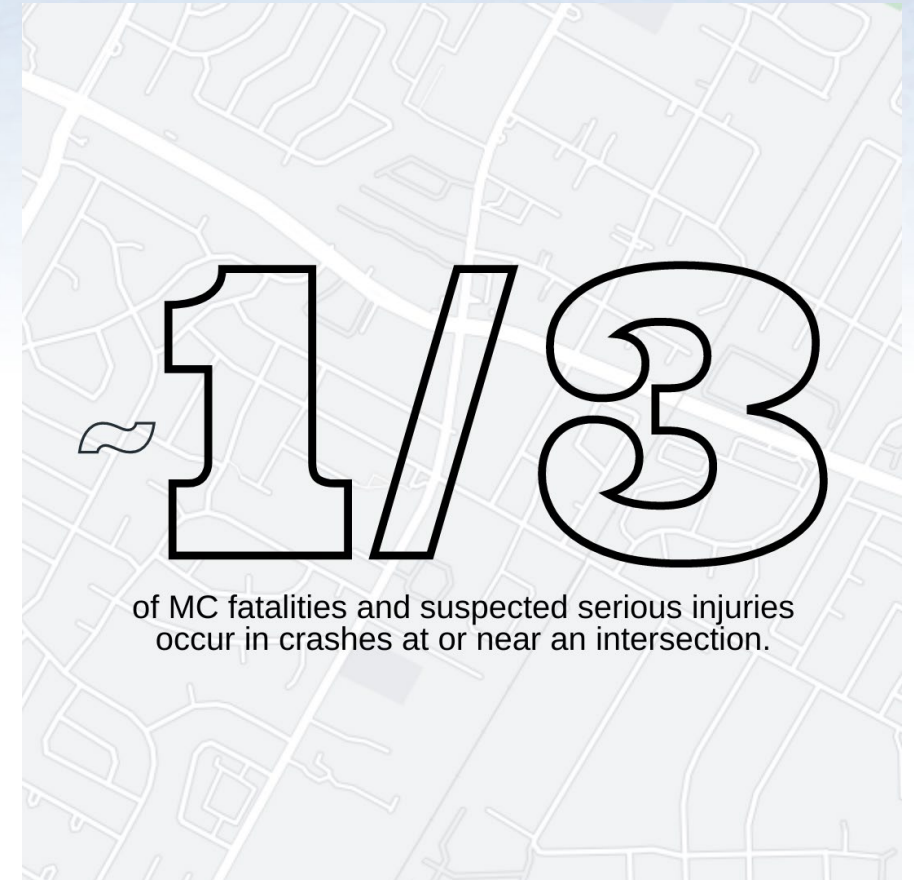
Where are crashes happening?

MC crashes most often occur on city streets but crashes on higher speed roadways are more fatal.



Urban, 67%

Rural, 33%

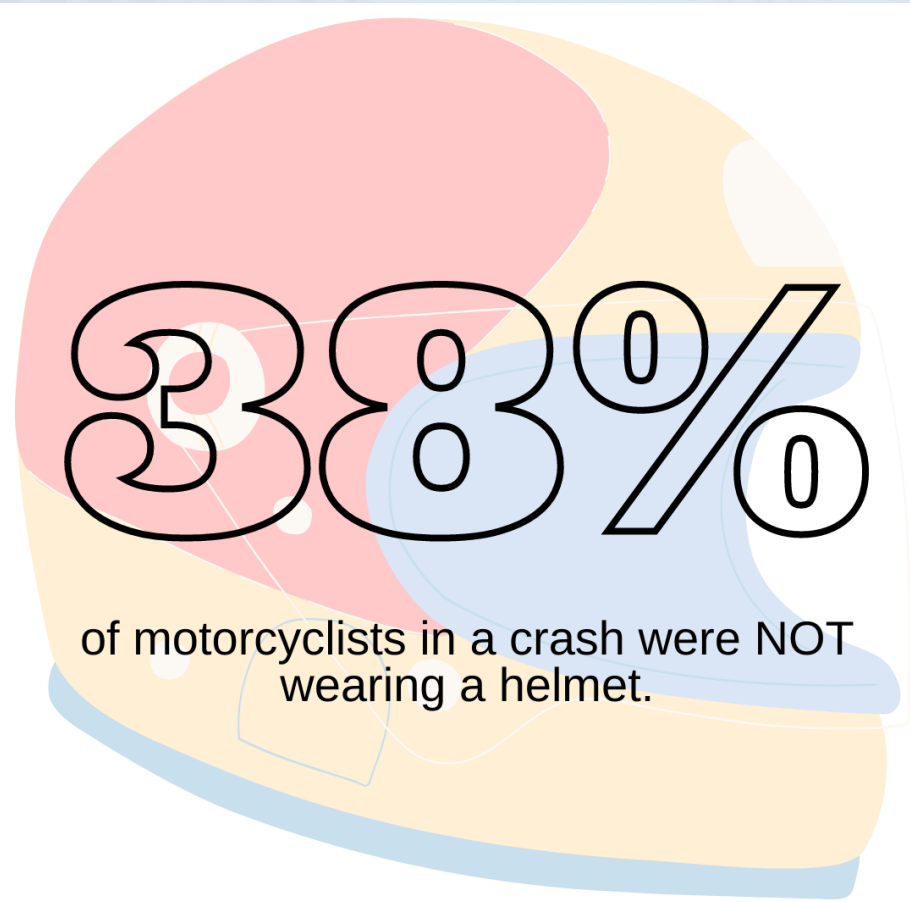


How many vehicles are involved?

- 56% of MC crashes involved two vehicles
- Multi-vehicle collisions most often occurred when at least one vehicle was:
 - Turning Left (19%)
 - Going Straight (10%)
 - Sideswipe (7%)

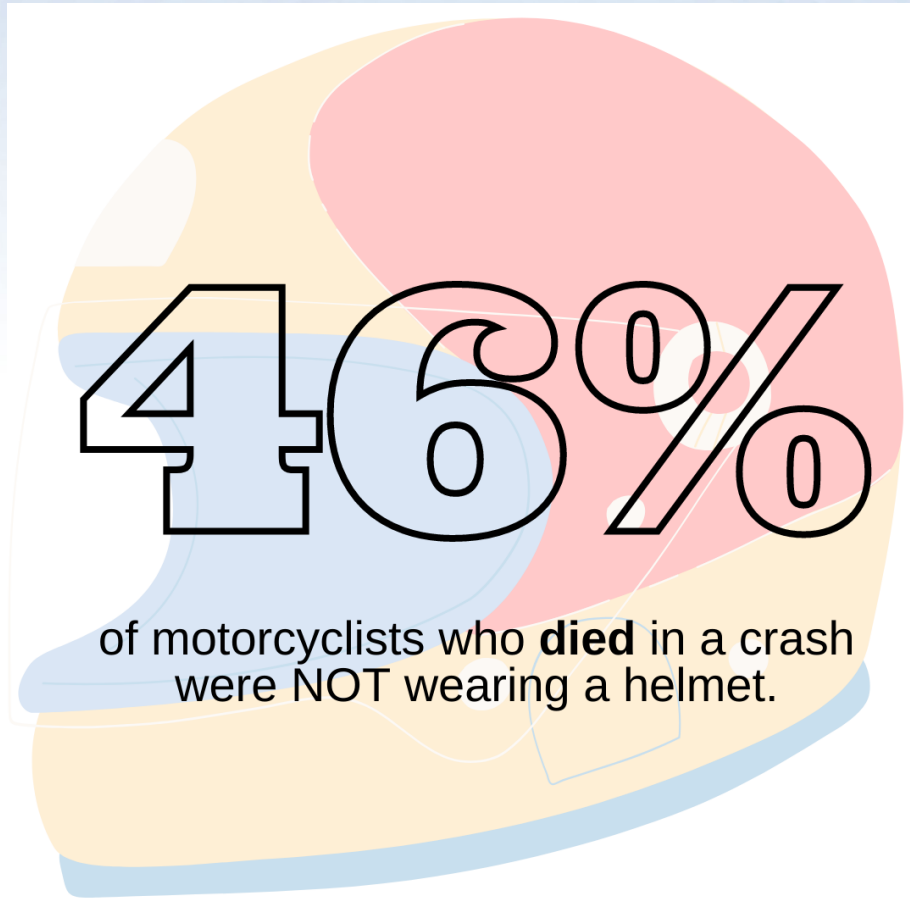


Are riders protecting themselves?



38%

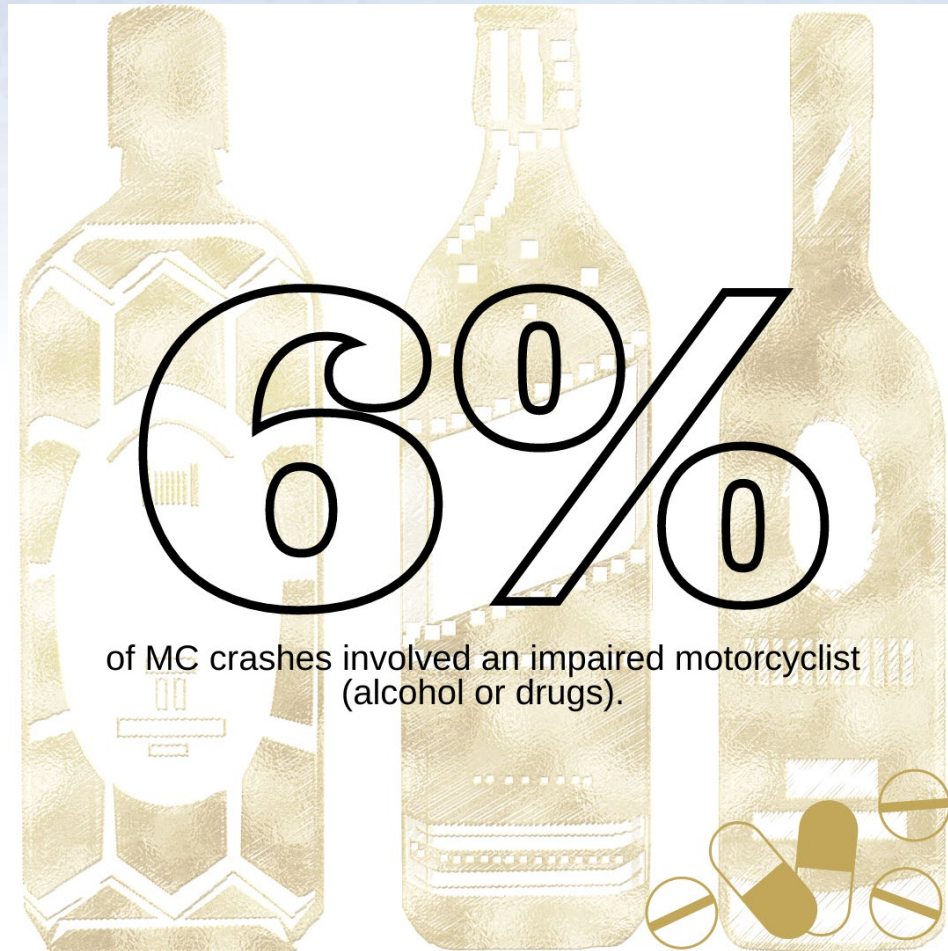
of motorcyclists in a crash were NOT wearing a helmet.



46%

of motorcyclists who **died** in a crash were NOT wearing a helmet.

Are riders impaired?

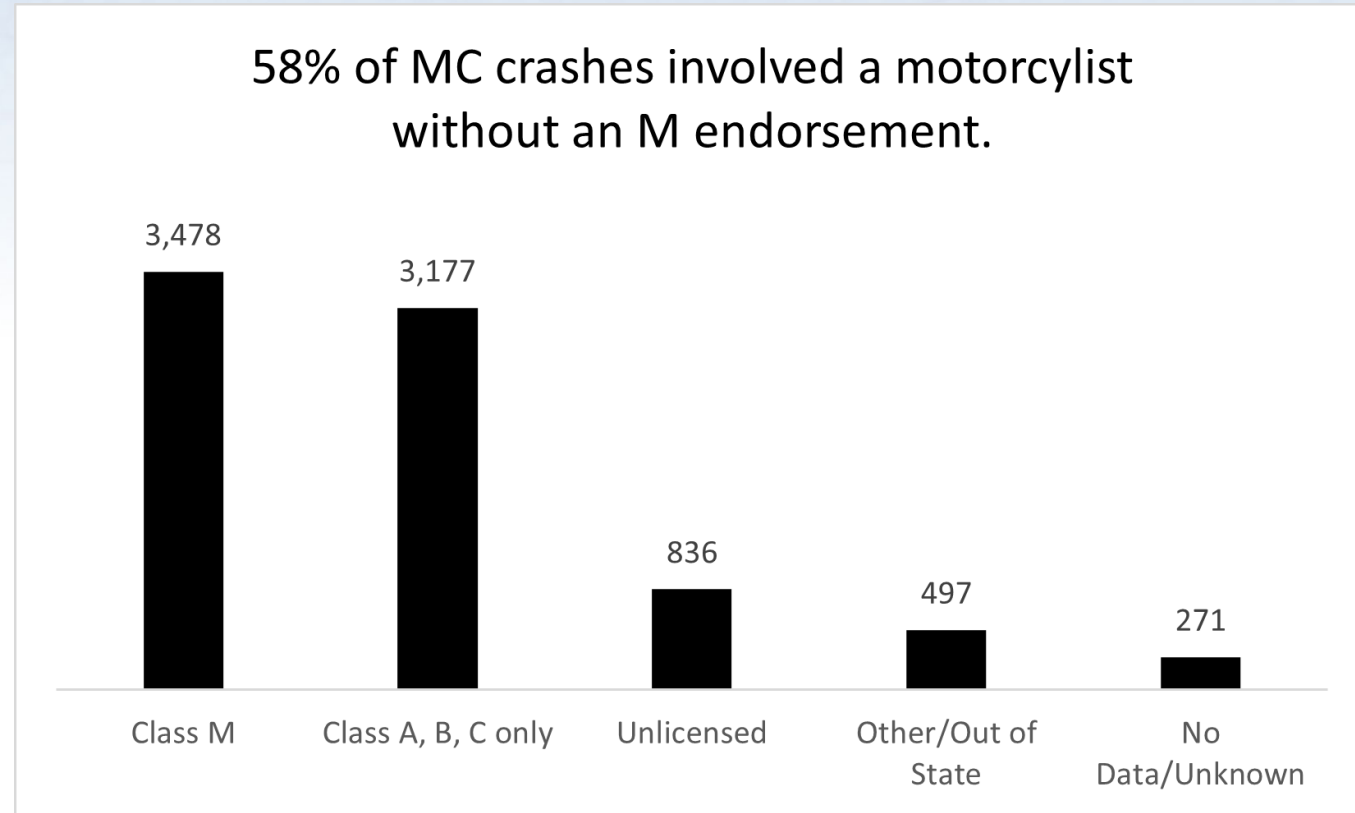


- Average BAC for a motorcyclist with a reported BAC greater than zero: .158
- Of motorcycle drivers with BAC of .08 or greater, the average test result was .172 (min: .08; max:.338)

Are riders going too fast?

- 10% of MC crashes involved speed (unsafe speed and speeding over limit)
- In half of these crashes, the motorcyclist ran off the road and struck a fixed object

Do riders have their M license?



Additional Resources

- www.LookLearnLive.org – standing reports
- www.TexasTRCC.org - TxDOT resource which helps to identify districts with over-representation for different types of crashes (MC coming soon)
- **2021 Motorcycle Data Presentation**





Questions?

Eva Shipp, PhD

E-shipp@tti.tamu.edu

Emily Martin, MS

E-martin@tti.tamu.edu

Texas A&M Transportation Institute

3135 TAMU

College Station, TX 77843-3135

info@tti.tamu.edu

Follow us on social media



2022 Texas Motorcycle Safety Forum