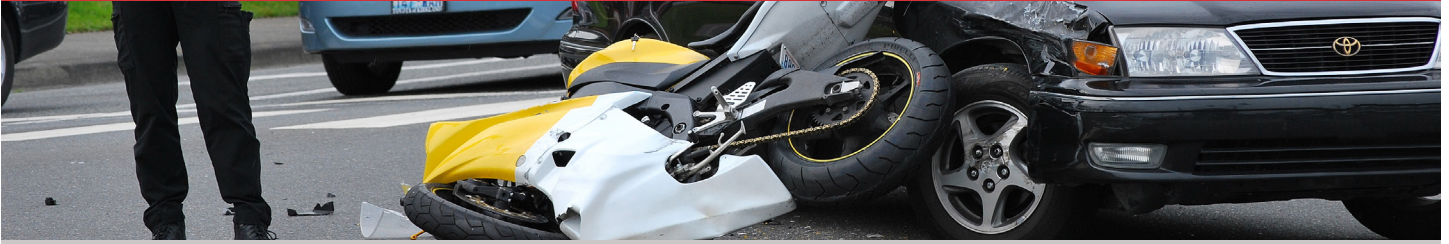
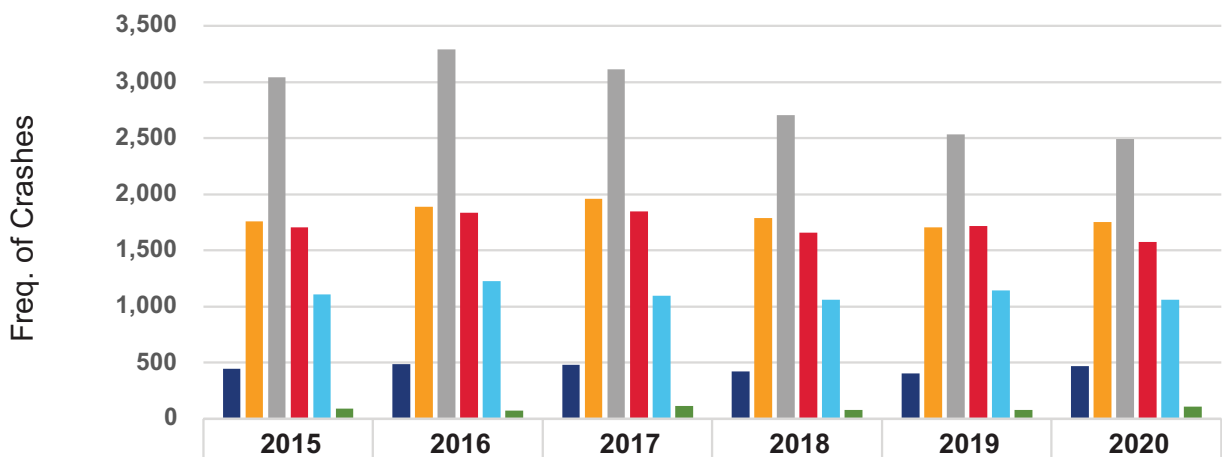


# MOTORCYCLE FACTS: CRASHES (2015–2020)\*



## TEXAS MOTORCYCLE CRASH CHARACTERISTICS

### NUMBER OF CRASHES BY SEVERITY



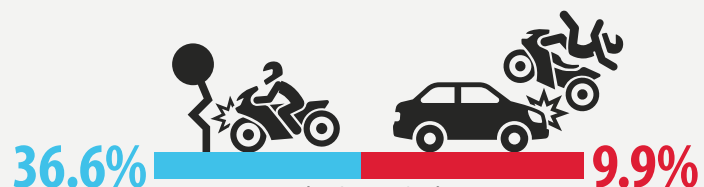
	2015	2016	2017	2018	2019	2020
Fatal	448	446	484	420	408	473
Suspected Serious Injury	1,759	1,890	1,961	1,788	1,708	1,753
Non-Incapacitating Injury	3,040	3,288	3,111	2,702	2,531	2,492
Possible Injury	1,706	1,834	1,849	1,658	1,718	1,578
Non-Injury	1,107	1,226	1,098	1,062	1,142	1,062
Unknown	90	75	115	79	83	107



**30%**  
VS  
**3%**

PERCENTAGE OF CRASHES  
THAT WERE  
**FATAL OR SERIOUS IN 2020**

### PERCENTAGE OF CRASHES THAT ARE SINGLE VEHICLE



Fatal or Serious Crash

**37% vs 10%**

Single Vehicle Multi-Vehicle

#### \*Data Sources:

1. Texas Department of Transportation. Crash Records Information System. 2015–2020.



# MOTORCYCLE FACTS: CRASHES (2015–2020)\*

## TEXAS MOTORCYCLE CRASH CHARACTERISTICS



PERCENTAGE OF  
CRASHES INVOLVING CURVES



**18%**

VS



**7%**



PERCENTAGE OF CRASHES OCCURRING ON  
2 LANE, 2 WAY ROADS



**15%**

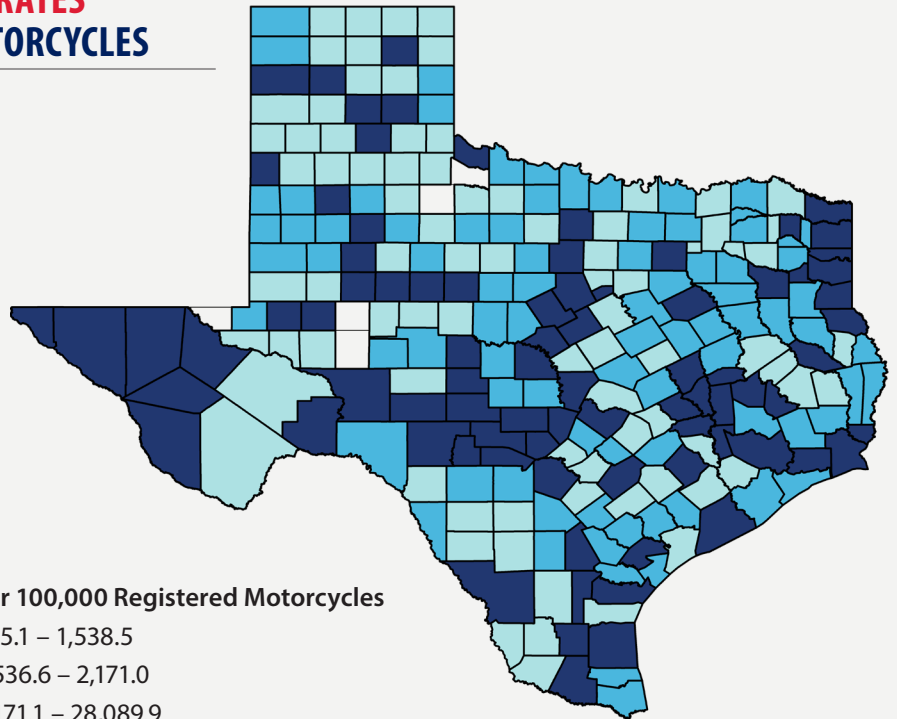
VS



**7%**

### TOP 10 COUNTIES FOR CRASH RATES PER 100,000 REGISTERED MOTORCYCLES

1. Real
2. Grimes
3. Bandera
4. Colorado
5. Potter
6. Brazos
7. Dallas
8. Gillespie
9. Webb
10. Jefferson



Rate per 100,000 Registered Motorcycles

255.1 – 1,538.5

1,536.6 – 2,171.0

2,171.1 – 28,089.9

PERCENTAGE OF CRASHES OCCURRING  
IN DARK-NOT LIGHTED CONDITIONS



**12%** vs **8%**



PERCENTAGE OF CRASHES OCCURRING  
IN CLEAR WEATHER



**79%** vs **69%**



TTI.CTS21110.8409.0821