

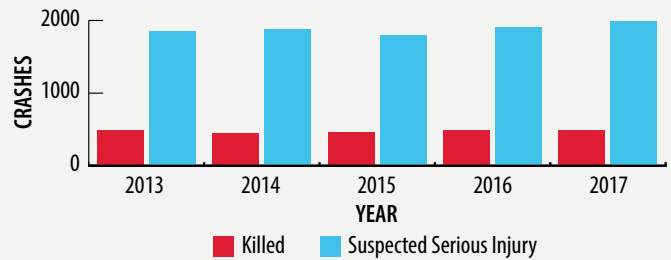
MOTORCYCLE FACTS-CRASHES (2010-2017)



The motorcycle fatal crash rate per vehicle miles travelled (VMT) is 27 times higher for motorcycles compared to the rate for all vehicles in 2016. (The rate of fatal crashes for motorcycles was 35.1/hundred million VMT compared to 1.3/hundred million VMT for all vehicles in 2016.)

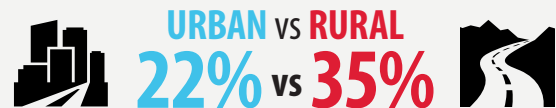
The fatal and serious motorcycle crash rate per vehicle registrations is 8.5 times higher than all vehicles in 2016. (The rate of fatal and serious crashes for motorcycles was 635.3 per 100,000 registered motorcycles compared to 75.1 per 100,000 registered all vehicles in 2016.)

MOTORCYCLE CRASH FREQUENCY OVER TIME BY SEVERITY

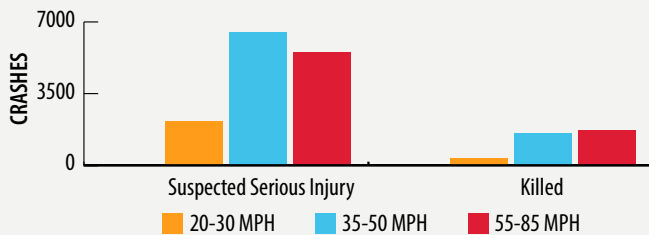


OVERALL MORE CRASHES OCCUR IN URBAN AREAS (70%)

PERCENTAGE OF URBAN AND RURAL CRASHES THAT ARE FATAL OR SERIOUS



CRASH SEVERITY BY SPEED LIMIT

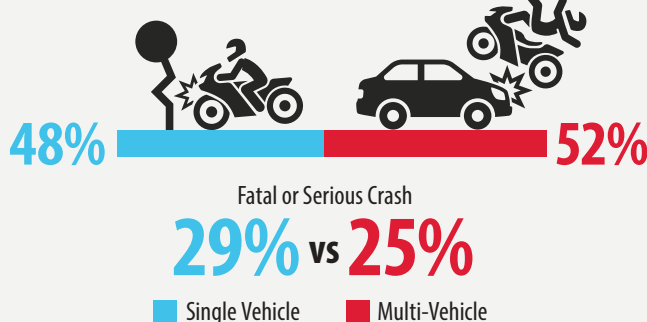


*Based on rider injury severity

PERCENTAGE OF MC AND NON-MC CRASHES THAT ARE FATAL OR SERIOUS



SINGLE VS MULTI VEHICLE CRASH



IMPAIRMENT



16% of fatal and serious MC crashes involved an impaired rider vs 2% of PDO MC crashes

61% of the impaired fatal and serious MC crashes were single vehicle crashes

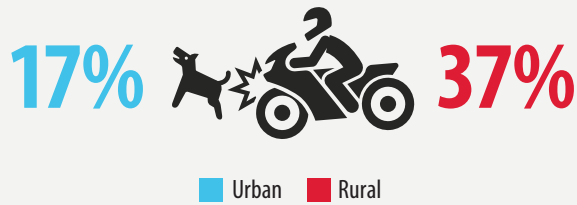
86% of the impaired fatal and serious MC crashes had an impaired MC operator involved

IN MULTI-VEHICLE MC CRASHES, THE TOP CONTRIBUTING FACTORS ARE:

1. Failed to control speed
2. Failed to yield right of way - turning left
3. Driver inattention
4. Failed to yield right - stop sign
5. Failed to yield right - private drive

MOTORCYCLE FACTS-CRASHES (2010-2017)

ANIMAL-INVOLVED MOTORCYCLE CRASHES FATAL OR SERIOUS

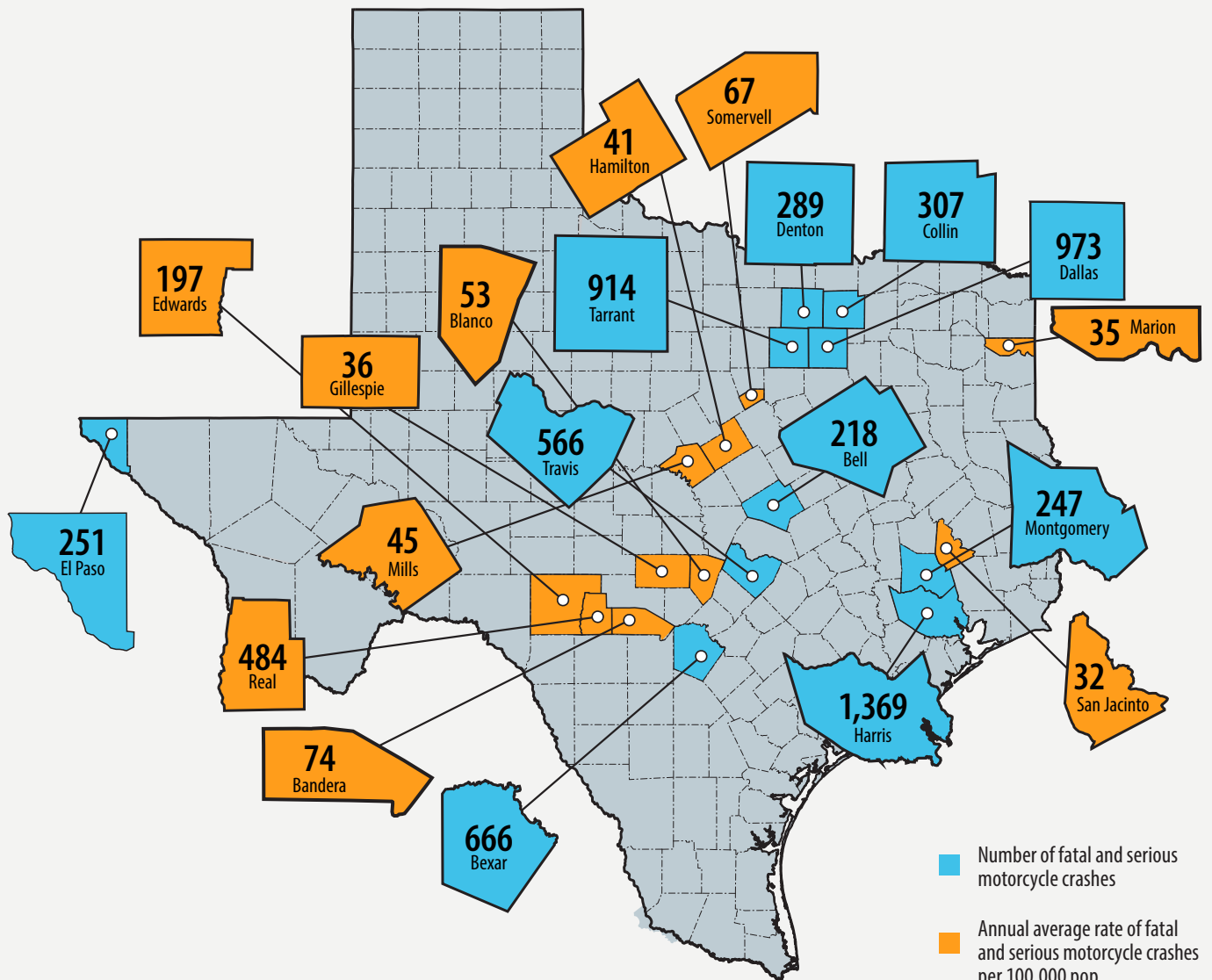


PERCENTAGE OF VEHICLES FOUND TO BE AT-FAULT



When conspicuity may have contributed to the crash, the color of the no-fault MC was more likely to be a dark versus bright color.

TOP COUNTIES FATAL AND SERIOUS MOTORCYCLE CRASHES, 2012-2016



1. Serious injuries or crashes are defined by TxDOT as suspected serious injuries (formerly incapacitating injuries).
2. Riders refers to operators and passengers unless otherwise specified.
3. Data are based on Texas Peace Officer crash reports (CR-3) as of May 21, 2018.