

# TEXAS DEPARTMENT OF PUBLIC SAFETY MOTORCYCLE SAFETY UNIT



2017 TEXAS MOTORCYCLE SAFETY FORUM

# Public Education and Assistance

## Motorcycle & ATV Safety Unit

### Occupant Safety Program



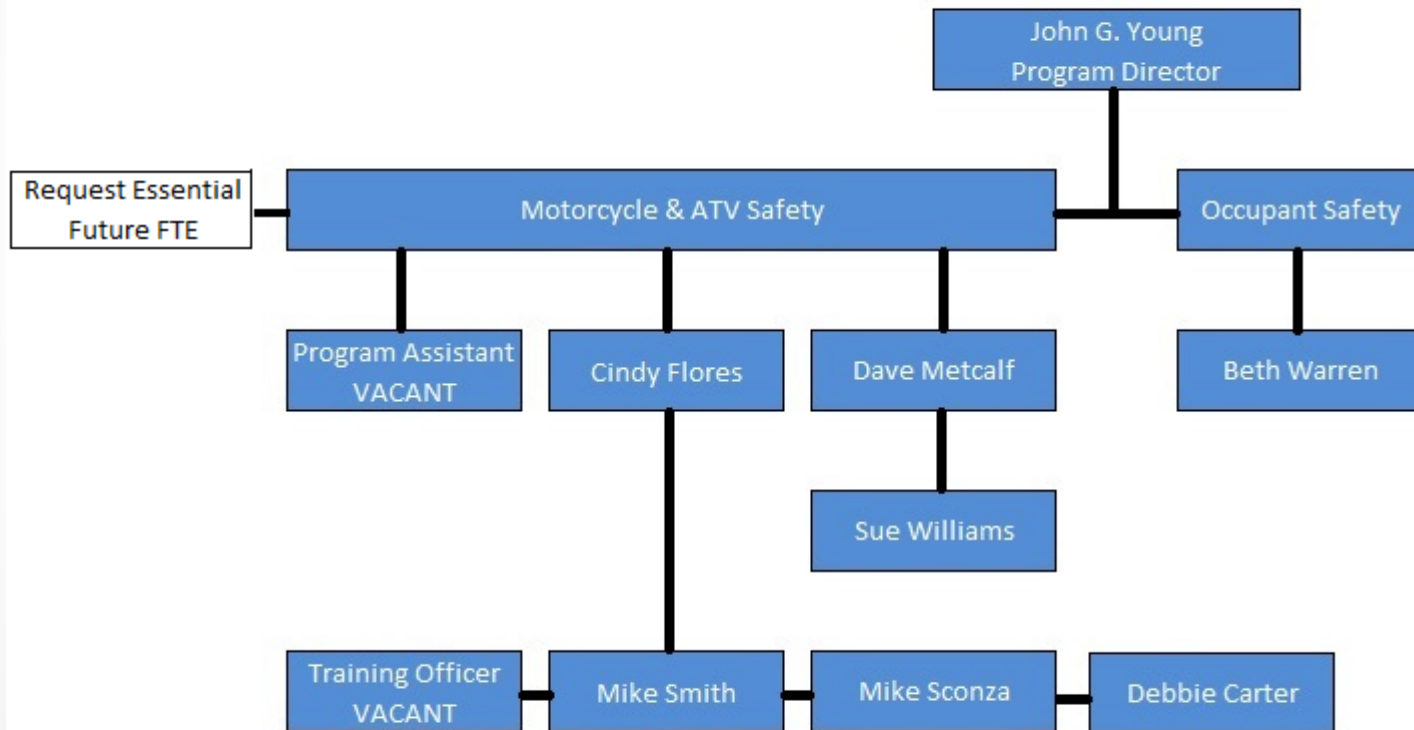
**Mission:** To make available to motorcycle operators information relating to the operation of motorcycles and courses in knowledge, skills, and safety relating to the operation of motorcycles and to provide information to the public on sharing roadways with motorcycles. Resource for all information pertaining to occupant safety in vehicles; child safety restraint systems, adult safety belts, air bags, and vehicular heatstroke awareness and education.



ETR – Public Education and Assistance, Motorcycle & ATV Safety Unit, Occupant Safety

FTEs	Filled	Vacant	Total
Motorcycle Safety	7	2	9
ATV Safety	0	0	0
Occupant Safety	1	0	1

	Budget Index	FY Budget	Current Budget	FTEs
Motorcycle Safety	22051	2,200,000	59,372	7
ATV Safety		0	0	0
Occupant Safety		0	0	1



**Region 5**  
**Training Officer**  
**Mike Smith**  
 Panhandle area to  
 Lubbock to Wichita  
 Falls to Abilene and  
 Midland/Odessa

**Region 1**  
**Training Officer**  
**Mike Smith**  
 Dallas/Fort Worth to  
 Texarkana to Marshall to  
 Waxahachie and Cedar Hill

**Region 4**  
**Training Officer**  
**Mike Smith**  
 El Paso to Alpine and San Angelo

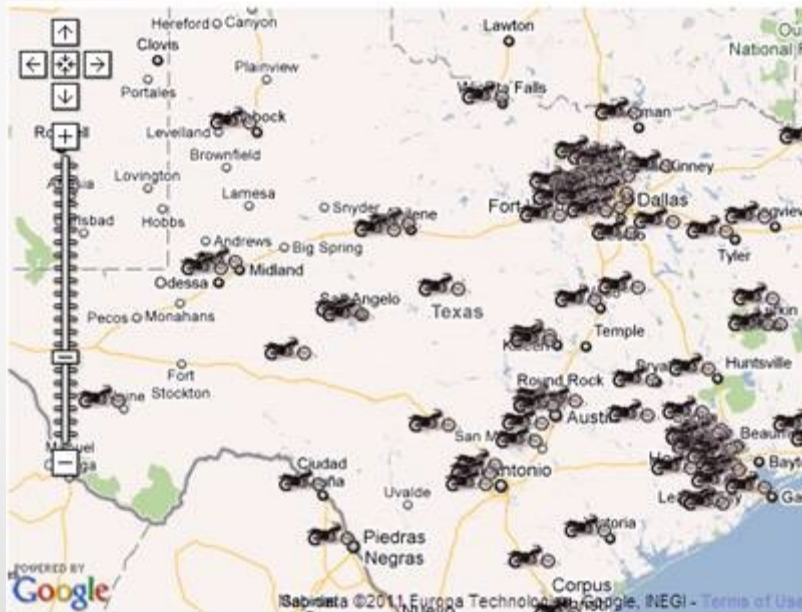
**Region 2**  
**Training Officer**  
**Cindy Flores**  
 Lufkin to Beaumont to  
 LaMarque

**Region 6**  
**Training Officer**  
**Cindy Flores**  
 Waco to Bryan/College  
 Station to Buda to Kerrville

**Region 3**  
**Training Officer**  
**Cindy Flores**  
 San Antonio to Victoria  
 to McAllen to Laredo



## Majority of Training Locations



# BUDGET



# **MSU STAFF**

PROGRAM COORDINATOR  
**JOHN G. YOUNG**

TRAINING OFFICERS  
**CINDY FLORES & MICHAEL SMITH (ONE PENDING)**

REGULATORY OFFICER  
**MICHAEL SCONZA**

MOBILE TRAINING OFFICERS  
**SUE WILLIAMS & DAVE METCALF**

ADMINISTRATIVE ASSISTANT  
**DEBBIE CARTER & (ONE PENDING)**

OCCUPANT SAFETY PROGRAM COORDINATOR –  
**BETH WARREN**

# MIDLAND RANGE

 **PROJECTED COMPLETION DATE**

 **2017 RCP**

 **2018 CERTIFICATION COURSES**



# LOANER MOTORCYCLES

**KAWASAKI**  
**ZPro125**



**240** REQUESTED FOR DELIVERY BEFORE AUGUST

**920** CURRENTLY ON LOAN TO SPONSORS

**39** MOTORCYCLES OLDER THAN 2000 WILL BE GIVEN PRIORITY



# NEW MOTORCYCLE RELATED BILLS

## SB288

Relating to the operation and movement of motorcycles on certain highways during periods of traffic congestion.




## HB1240

Relating to the rules of the road regarding red signals at certain traffic control signals.

## HB1236

Relating to the operation of a motor vehicle in the vicinity of an unprotected road user; creating a criminal offense.

# BRCu TEST/RETEST POLICY

-  25 QUESTIONS IN ADDITION TO eCOURSE CERTIFICATE
-  NO KNOWLEDGE OR SKILL RETEST
-  SCHEDULING GUIDELINES IN PASSWORD AREA

# MC/ATV TRAINING IN TEXAS

## STUDENTS TRAINED

38,301 (2016)

650,043 (SINCE 1983)

## SPONSORS AND RANGES

106 SPONSORS

239 TRAINING LOCATIONS

9 RANGE CLOSURES (2016)

## INSTRUCTORS

569 Instructors (381 RCs)

20 RIDER COACH RESIGNATIONS (SINCE 2015 CONFERENCE)

# INCIDENT REPORTS

There were 1,666 IR's  
in 2016.



# INSTRUCTOR MAKE UP

STATS ARE BASED ON 381 MSF INSTRUCTORS

AVERAGE AGE – 54 – (25 – 86; 60% OVER 50)

AVERAGE YRS. CERTIFIED –RANGING FROM 6MO TO 31YRS

27 - OVER 20YRS;

102 - 10-19YRS;

252 - UNDER 10YRS)

# YEARS CERTIFIED

## 6 MONTHS TO 31 YEARS



■ Over 20 = 7%    ■ 10-19 = 27%    ■ less than 10 = 66%

# MALE vs. FEMALE

## WOMEN INSTRUCTORS



■ Women = 11%

■ Men = 89%



# TRANSITIONAL PREPS (TRCP)

18 TRCPs CONDUCTED

143 TRAINED

76% PASSED (110)

24% UNSUCCESSFUL (33)

10 RETURNING RCs

90% PASSED (9)

10% UNSUCCESSFUL (1)

# TOTAL CONTROL

TC SPONSORS - 4

TC LOCATIONS(RANGES) - 7

STUDENTS TRAINED:

CY15      221 STUDENTS

CY16      606 STUDENTS



Questions?  
Comments?  
Concerns?