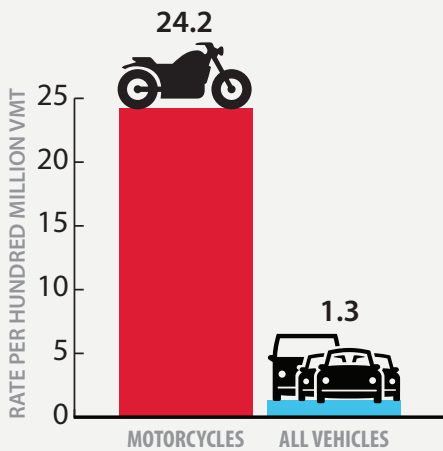


MOTORCYCLE FACTS – CRASHES AND TRIP PROFILE



Fatal crash rate per hundred million vehicle miles of travel (VMT) in 2014



- **The motorcycle crash rate per VMT is over 18 times higher than all vehicles.**
 - The rate of fatal crashes for motorcycles was 24.2/hundred million VMT compared to 1.3/hundred million VMT for all vehicles in 2014.
 - This rate is in line with national estimates.
- **Motorcycle riders are overrepresented in fatal crashes.**
 - Despite representing a small portion (<1%) of total VMT, motorcycle rider fatalities account for over 13% of all traffic fatalities.
- **Most motorcycle trips are short.**
 - >75% of daily motorcycle mileage is based on trips that are 50 miles or less.
- **Older riders make more trips than younger riders.**
 - 45-54 year-olds make more than one-third of trips.
- **Younger riders make fewer trips, but are involved in about one-quarter of severe crashes.**
 - 25-34 year-olds account for 23% of fatal and incapacitating crashes, but they make less than 12% of motorcycle trips.

Crash and injury rates based on VMT for motorcycles versus all vehicles for Texas, 2014*

| | Fatal Crash Rate | Incapacitating Crash Rate | Fatal and Incapacitating Crash Rate | Total Crash Rate |
|--------------|-------------------|----------------------------|--------------------------------------|------------------|
| Motorcycles | 24.2 | 100.1 | 124.3 | 464.8 |
| All Vehicles | 1.3 | 5.6 | 6.9 | 196.5 |
| | Fatal injury Rate | Incapacitating Injury Rate | Fatal and Incapacitating Injury Rate | All injury rate |
| Motorcycles | 25.1 | 108.6 | 133.7 | 439.5 |
| All Vehicles | 1.5 | 7.1 | 8.5 | 99.4 |

*Rate per hundred million VMT.

- **Trip making differs by income.**
 - Riders earning over \$75,000 per year make more trips than other income categories.
- **Motorcycle trips are overwhelmingly made by male riders (approx. 85-98%).**

NOTES:

Vehicle Miles of Travel (VMT): 1 VMT = 1 mile of travel by 1 vehicle.

Severe injury rates are based on the total number of severe injuries resulting from a motorcycle crash.

Rider: a motorcycle operator unless otherwise noted.